

Beyond Abenomics: The Bullish Case for Japan

Andrew Wylegala – Minister Counselor for Commercial Affairs

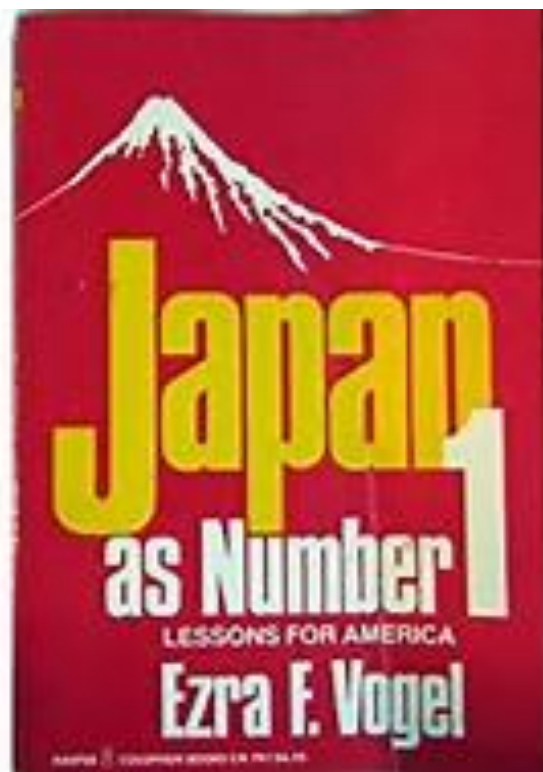


March 27-28, Los Angeles





INTERNATIONAL
TRADE
ADMINISTRATION





INTERNATIONAL
TRADE
ADMINISTRATION





INTERNATIONAL
TRADE
ADMINISTRATION





INTERNATIONAL
TRADE
ADMINISTRATION



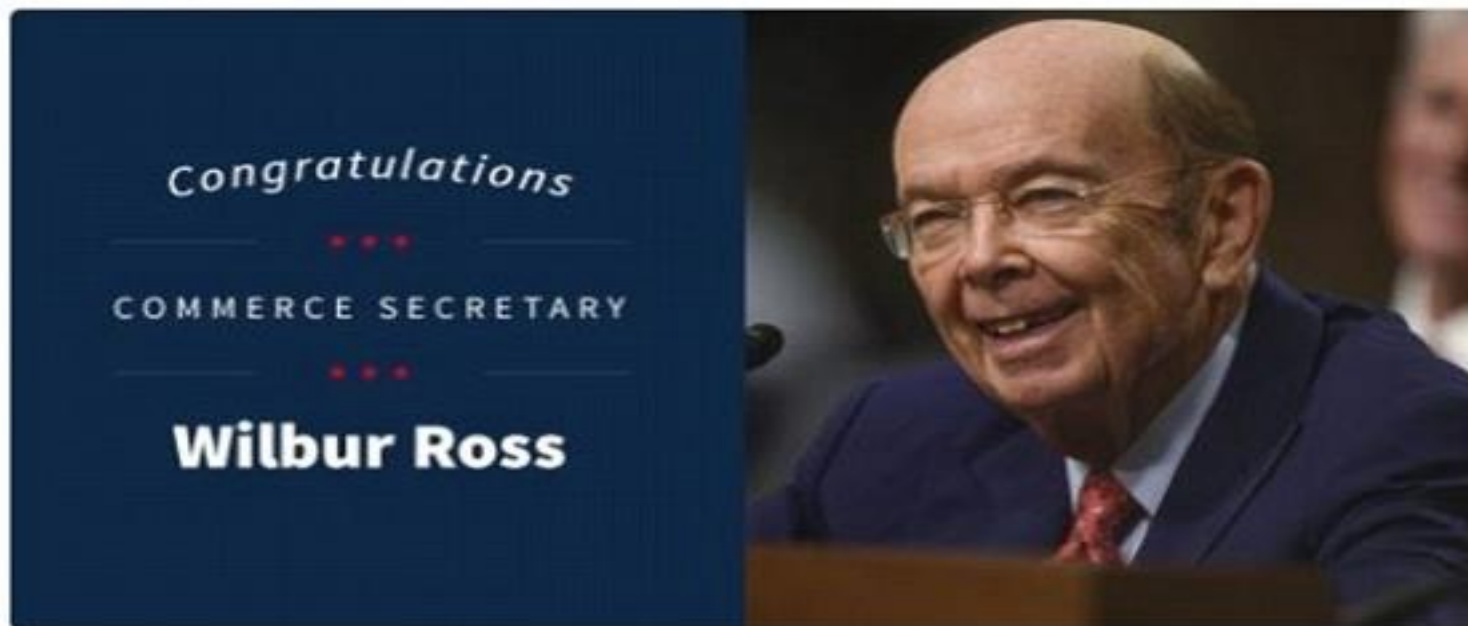


INTERNATIONAL
TRADE
ADMINISTRATION



President Trump  @POTUS · 2h

Congratulations to our new Secretary of
[@CommerceGov](#), Wilbur Ross!



 1.4K  2.6K  13K



INTERNATIONAL TRADE ADMINISTRATION

Tokyo Olympics "Latest Map"

Some constructions **cancelled**, due to budget cuts

Venue name
Athletic game
Budget: the initial budget
Revised: Before revision
New: After reexamination

On schedule
Changed Location
Construction cancelled

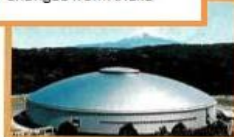
Tokyo

Takenaka Corp. JV
(Main Arena)

Musashino Forest Park
Badminton, Fencing
Budget: \$220,564,557
➤ Revised: \$309,672,638
➤ New: **\$155,889,735**

Kashima JV
(Sub-Arena, Pool section)

Izu Velodrome
Cycling
Changed from Ariake



Enoshima Yacht Harbor
Sailing
Changed from Wakasu Olympic Marina



*The initial budget numbers are from 2013 "Candidate file"
*JV: Joint Venture

Saitama Super Arena
Basketball
Changed from Yumenoshima Youth Plaza

Taisei Construction JV

New National Stadium
Opening/Closing ceremony, Track & field, Soccer
Budget: \$1,296,919,595
➤ Revised: \$2,223,290,734
➤ New: **\$1,314,564,671**



Equestrian Park
Equestrian
Changed from Yumenoshima

Olympic Gymnastic Centre
Gymnastics
Budget: \$0
➤ Revised: \$78,520,982
➤ New: **Estimated \$78,520,982**

Seaside Park Hockey Stadium
Hockey
Budget: \$22,056,455
➤ Revised: \$42,348,394
➤ New: **Estimated \$42,348,394 (maintenance cost)**

Kanagawa Prefecture

Saitama Prefecture

Olympic village
Lodging facility
Budget: \$951,956,628
➤ New: **\$841,674,349**



Tokyo Bay

Ariake Tennis Park
Tennis
Budget: \$52,053,235
➤ Revised: \$127,045,184
➤ New: **Estimated \$127,045,184 (maintenance cost)**



Exchange rate
(2017.1.26)
\$1.00 = 113.35 yen

Takenaka Corp. JV

Ariake Arena
Volleyball
Budget: \$155,277,448
➤ Revised: \$356,432,324
➤ New: **\$317,867,052**



Olympic Aquatics Center
Aquatics
Budget: \$283,204,891
➤ Revised: \$602,582,370
➤ New: **\$414,484,915**



Obayashi JV

Makuhari Messe
Wrestling, Fencing, Taekwondo
Changed from Tokyo Big Site



Wakasu Olympic Marina
Sailing
Budget: \$81,167,756
➤ Revised: \$365,254,906
➤ **Cancelled**

Yumenoshima Youth Plaza
Badminton, Fencing
Arena B
Basketball
Budget: \$321,141,995
➤ Revised: \$776,387,240
➤ **Cancelled**

Chiba Prefecture

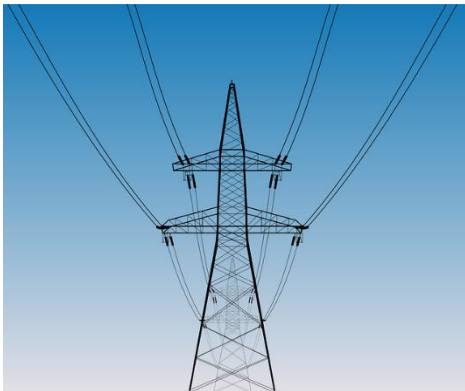
Sea Forest Waterway
Canoe, Kayak
Budget: \$60,875,817
➤ Revised: \$915,784,040
➤ New: \$219,667,476



Taisei Construction JV

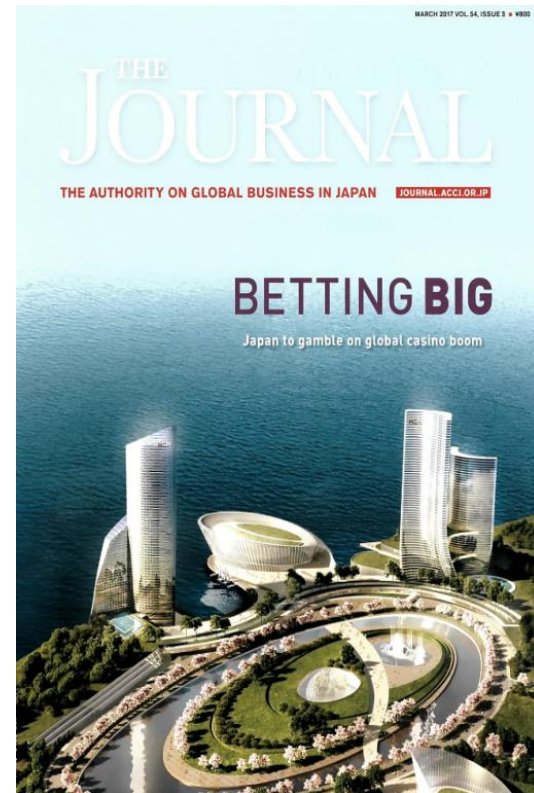


INTERNATIONAL
TRADE
ADMINISTRATION



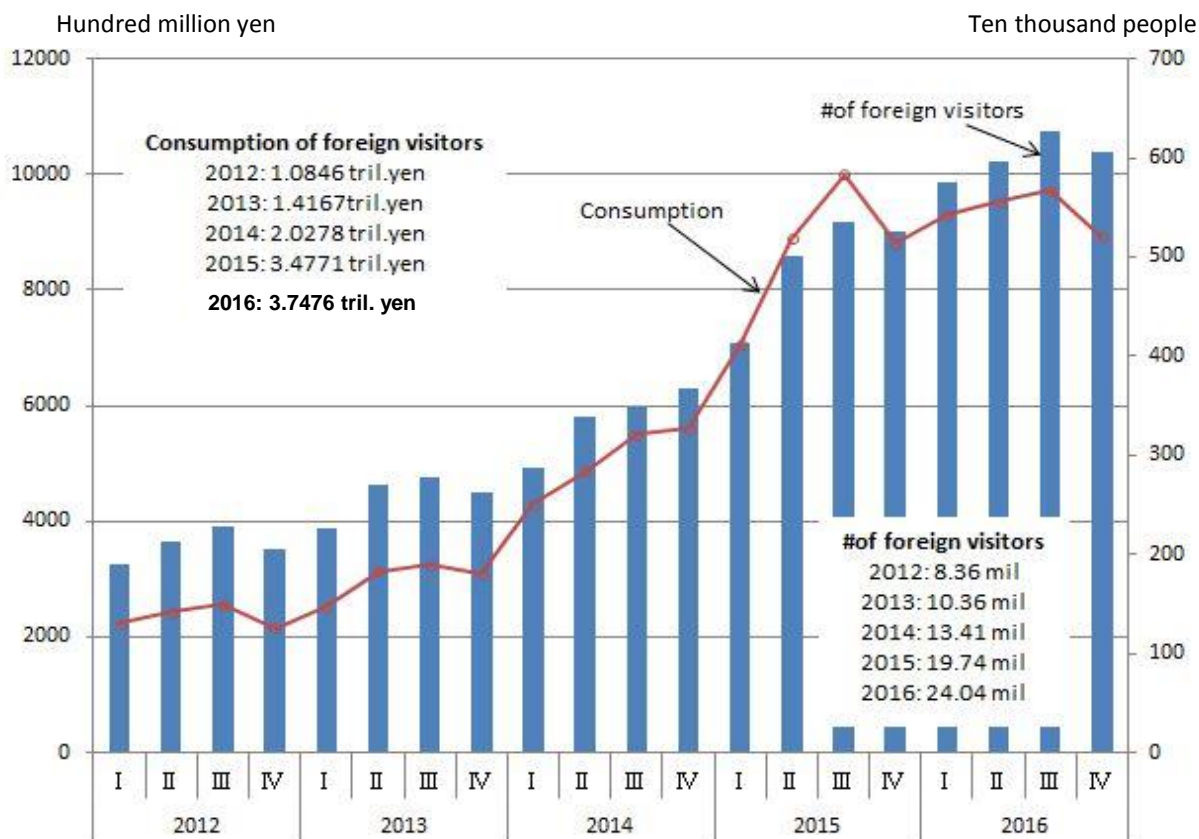


INTERNATIONAL
TRADE
ADMINISTRATION



Inbound Tourism

The Number of Foreign Visitors and Their Consumption





INTERNATIONAL
TRADE
ADMINISTRATION





INTERNATIONAL
TRADE
ADMINISTRATION

THE JOURNAL

THE AUTHORITY ON GLOBAL BUSINESS IN JAPAN JOURNAL.ACCI.ORG.JP

SILVER LINING OF A GRAY CLOUD

Monied seniors are a marketer's dream





INTERNATIONAL
TRADE
ADMINISTRATION

THE WALL STREET JOURNAL.

Panasonic to Sell Health Care Unit to KKR

By Kana Inagaki And
Daisuke Wakabayashi

Updated Sept. 27, 2013 7:12 a.m. ET
TOKYO—U.S. private-equity giant [KKR](#) & Co. landed its biggest deal in the Japanese market with an agreement to buy [Panasonic](#) Corp.'s health-care unit for ¥165 billion (\$1.7 billion). "This could be a great model for rest of corporate Japan...", said Kenneth Lebrun, a partner and M&A expert at Shearman & Sterling LLP in Tokyo.



INTERNATIONAL
TRADE
ADMINISTRATION

Everything gets smart

Smart phones

Smart Homes

Smart Cars

Smart Factories

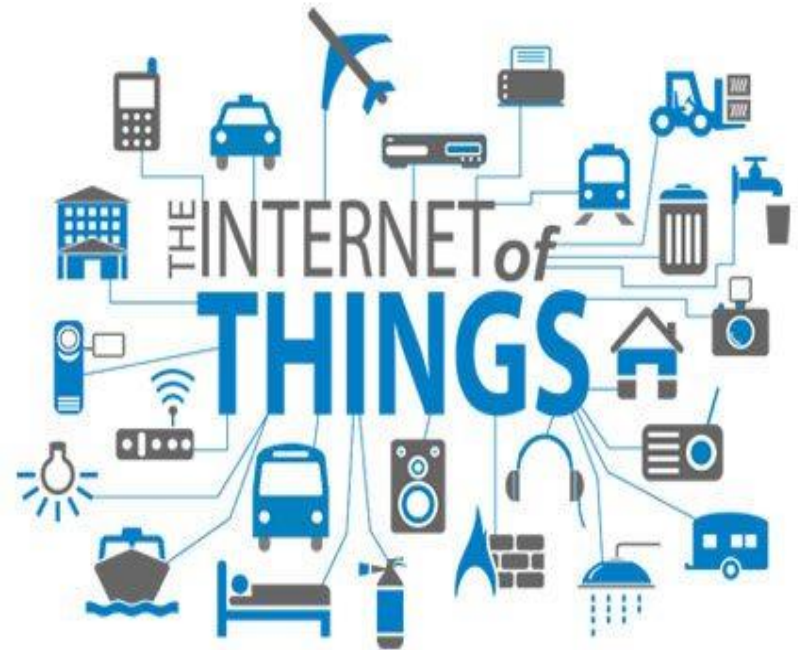
Market
Pull

Technology
Push

smartFactory ^{KL}®

© smartfactory-KL 2013.3

IFS Innovative
Factory Systems





INTERNATIONAL
TRADE
ADMINISTRATION





INTERNATIONAL
TRADE
ADMINISTRATION





INTERNATIONAL
TRADE
ADMINISTRATION

A few tips for Success in Japan

- Prepare exhaustively
- Translate materials
- Business etiquette
- Focus on relationships
- Seamless service
- Long-term commitment





INTERNATIONAL
TRADE
ADMINISTRATION



*Commercial Service Field Guide
for Constituent Posts of the
U.S. Mission in Japan*





INTERNATIONAL
TRADE
ADMINISTRATION

CS Japan: Here to Help!



U.S. Commercial Service

Web: www.export.gov/japan

E-mail: Andrew.Wylegala@trade.gov

1-10-5 Akasaka, Minato-ku, Tokyo 107-8420

Tel: 81-3-3224-5050/ Fax: 81-3-3224-5064

<http://japan.usembassy.gov/business.html>